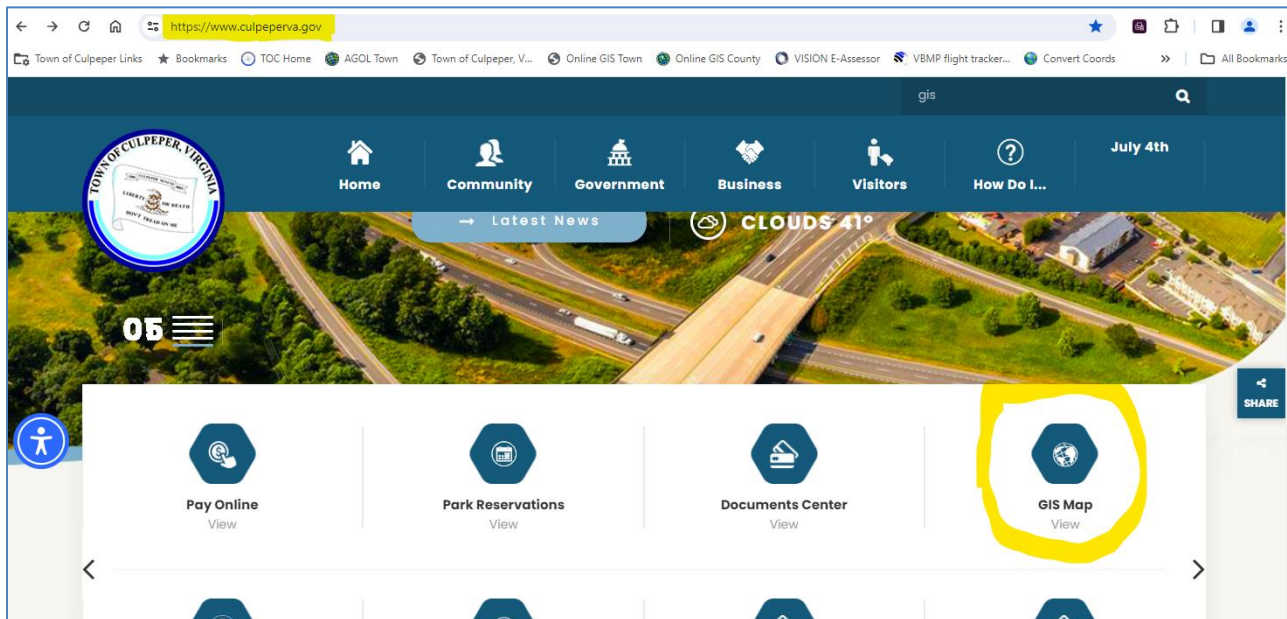


How to Access the Town of Culpeper OnlineGIS Mapping System

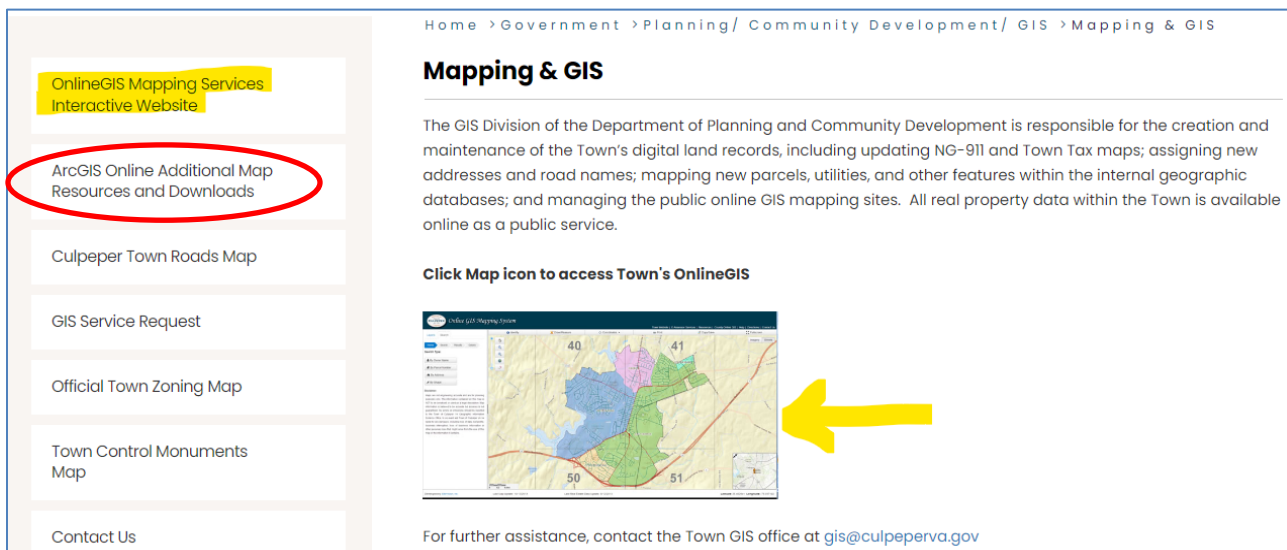
You can access our online GIS site from the Town of Culpeper website (www.culpeperva.gov)

– Click **Government** tab, then choose **Planning/Community Development/GIS**, then **Mapping & GIS**

*You can also scroll down to the Featured content ribbon on the Home page, arrow right to *GIS Map*



The current online *Town GIS mapping* site can be accessed by clicking the map image or using the Quick Link (GIS Mapping Services Interactive Website) on the left side bar of the page, as shown in yellow below. *ArcGIS Online* Additional Map Resources content can also be access through the Quick Link circled in red.



Please email **Town GIS office** for additional assistance at gis@culpeperva.gov, or contact staff directly:

Autumn Fitch, GIS Coordinator, GISP

540-829-8257

afitch@culpeperva.gov

Emily Thompson, GIS Analyst, GISP

540-829-8258

ethompson@culpeperva.gov

ArcGIS Online (AGOL) Map Resources

ArcGIS Online (AGOL) is a cloud-based, subscription mapping website hosted online by ESRI, our GIS software vendor. This site is the Town's additional mapping resources web page. It is optimized for Google Chrome, but can be viewed in most current internet browsers at the following link:

Town of Culpeper ArcGIS Online Subscription Home Page: <http://culpeperva.maps.arcgis.com>

This site can also be reached from the Town of Culpeper GIS Page QuickLink: AGOL Map Resources and Downloads



** Public maps DO NOT require a 'Sign In' to view. Only access to secure (internal) town maps require a registered login.*

The following Tabs in the upper left of the webpage are used to navigate the site:

HOME Tab: Scroll down to view Featured Content, Town Tax Maps, and Public Services related applications

GALLERY Tab: All Public (unsecured) Maps and Apps for Town of Culpeper are stored here

MAP Tab: World Imagery Basemaps (like Google maps) – Zoom/Pan outside the Town limits here

SCENE Tab: 3D capability - not used for public map resources at this time

GROUPS Tab: Filters out content for named groups – not used for public map resources

*You can always use the back arrow of your internet browser to return to a previous screen (or use the Home drop-down in upper left to select the **Home** or **Gallery** Ribbon again).*

There is varied content available on The Town of Culpeper ArcGIS Online site:

Single-page PDF maps are available to open for a quick view online (Culpeper_Town_Roads & Snow_Emergency_Routes)

Simply click the thumbnail image from the Public Services ribbon on the Home Page to quick-view the map online

Public Services

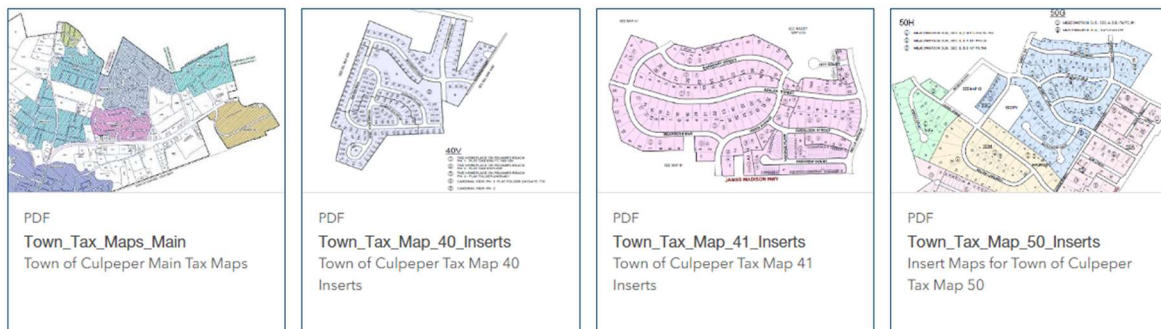
Map applications related to community development & public utility services



Multi-page PDF Mapbooks are also available on ArcGIS Online (Tax Maps), but it is best to download those files to your computer first and then view in Adobe Reader if you wish to be able to select or click through them by page number.

Town Tax Maps

Main Tax Maps and Insert Tax Maps showing parcels within the Town of Culpeper VA



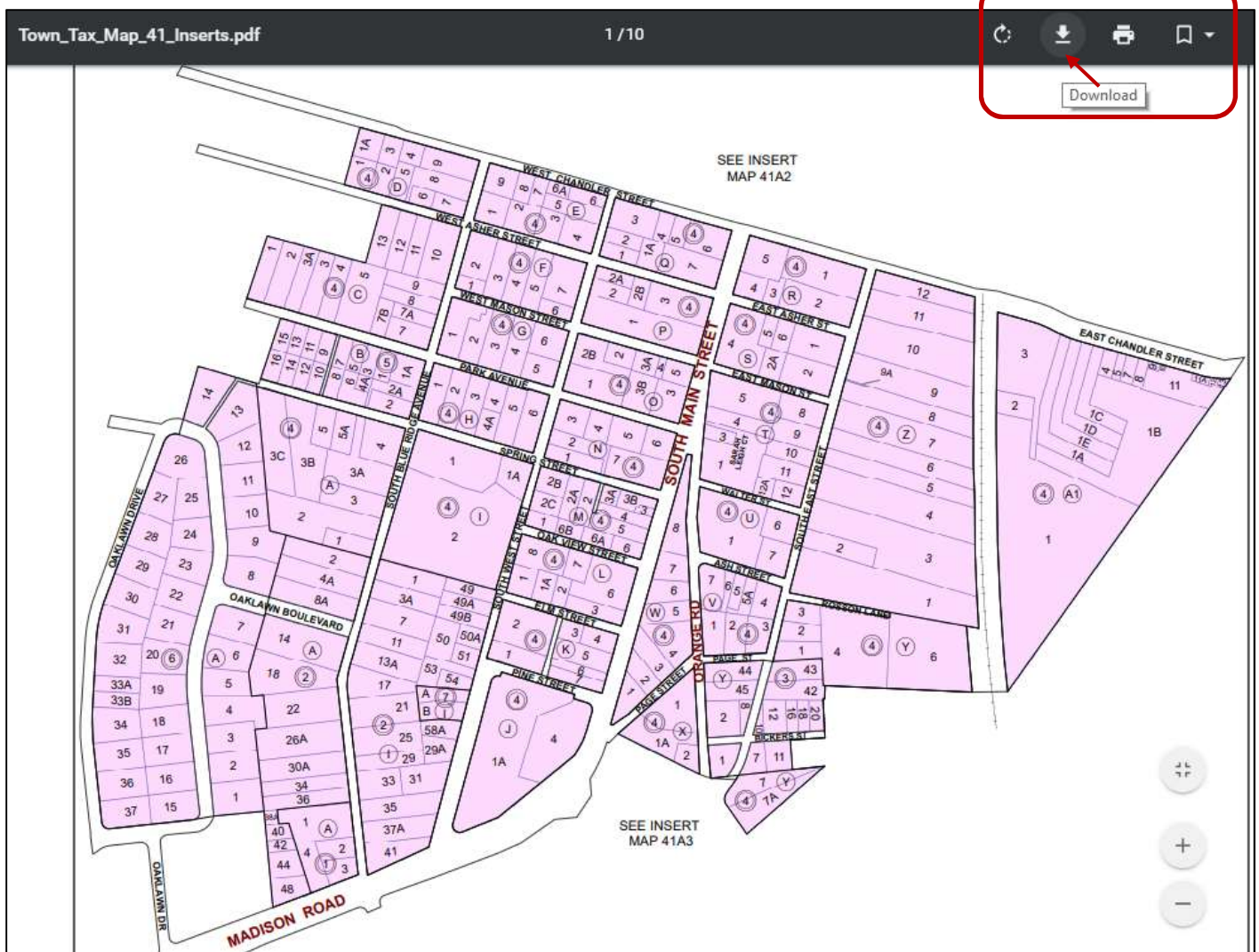
By clicking the **Gallery** Tab, you have more options available. From here, clicking on the Map Title (or **View item details** from the ellipsis... in the lower right) opens an overview page which displays more information about the map file.

PLEASE NOTE: *The maps in ArcGIS Online are copies that are shared in the cloud. Any edits made to the Town's internal maps must be published to AGOL before the changes are visible online. You can view the 'created date' and the 'last updated date' in the item details page under the Title and Short Description.*

If an item is available for view online, you will see a blue Open box on the top right of the item details page. If the item is unable to be viewed online, you may still see a Download box if this is the only option available for the item.

You can also download files from within the online viewer by hovering your cursor at the top of the image screen until the tools appear – you will see the *download arrow and printer icon in the top right (as shown below).

**This is the best way to save the Tax Map files to your local network or desktop location for easier viewing.*

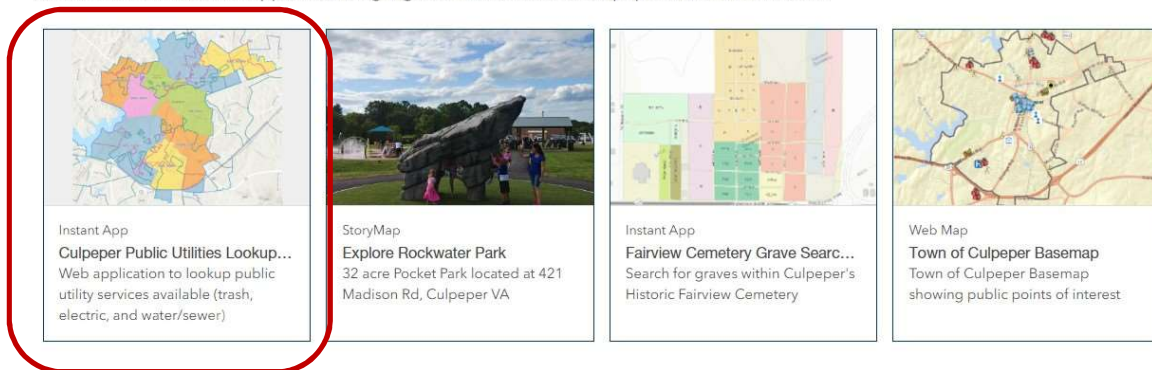


Web maps are interactive mapping applications that allow you to zoom in/out and turn on/off layers as needed. They contain more information than static map images, since you can click on features to identify attributes.

Most Town web maps are used for internal purposes, therefore are secured from public use.

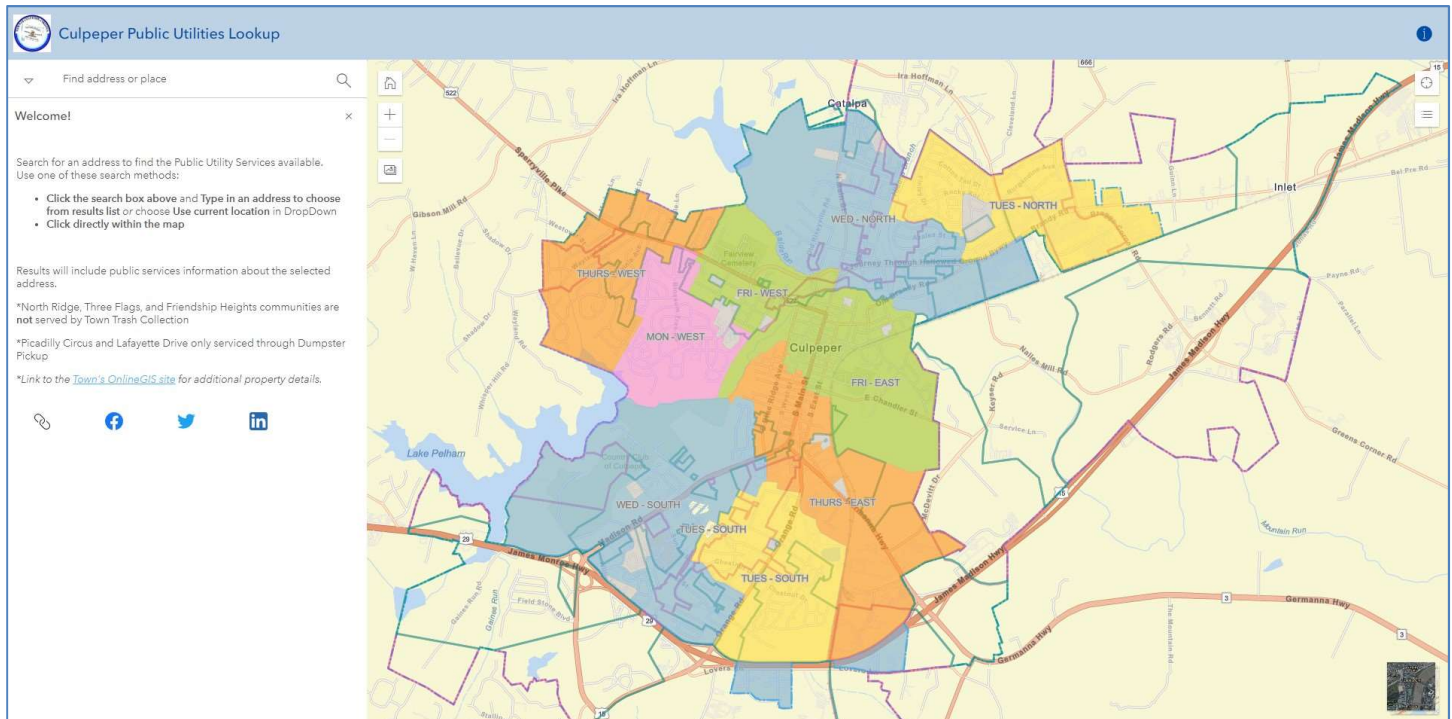
FEATURED CONTENT

A collection of interactive applications highlighted on the Town of Culpeper's ArcGIS Online site



The **Culpeper Public Utilities Lookup Application** is unsecured and can therefore be used by the public to lookup their address and determine the associated water/sewer or electric service and trash collection day for their property. This

new application replaces and expands upon the former Culpeper Town Trash Pickup web map (which has been archived to the Gallery).



A GIS WebMap consists of many different layers of geographic data. When you first display the map, the scale is set to zoom to the entire Town. Click the **HOME** icon to return to this default Town boundary

Example: Open [Culpeper Public Utilities Lookup Application](#); Type 400 S Main St in the top right Search window; Search results will begin to appear in the drop-down list; Click on your address of interest.



Culpeper Public Utilities Lookup

400

400 E Chandler St, Culpeper, VA, 22701, USA

400 S Main St, Culpeper, VA, 22701, USA

400 S East St, Culpeper, VA, 22701, USA

400 US Ave, Culpeper, VA, 22701, USA

400 S West St, Culpeper, VA, 22701, USA

Results will include public services information about the selected address.

*Link to the [Town's OnlineGIS site](#) for additional property details.

There are currently two private subdivisions that have been grandfathered into service, Lafayette Drive and Picadilly Circus. These are serviced by Town Trash Collection through Dumpster Pick-Up but not individual cans. These will show up with a hatched symbol on the map and the pop-up will show **'TUESDAY (DUMPSTER)'**

Culpeper Public Utilities Lookup

1830 PICADILLY CIRCUS

Results:3

Trash Collection Day

Trash_Day	TUESDAY (DUMPSTER)
Contact	1-540-825-0285
NOTES	TUES - SOUTH

TOC Electric Service

Territory	TOWN LP
Contact	1-540-825-8165
NOTES	LIGHT & POWER SERVICE AREA

WaterSewer ServiceArea

Location	TOWN
Contact	1-540-829-8220

1830 PICADILLY CIRCUS



Click the **Screen Capture** icon to expand the tool to create a PDF document of map

Capture an image

Select additional elements to include with the map.

☐ Legend

☒ Include results

Screenshot layout

Horizontal

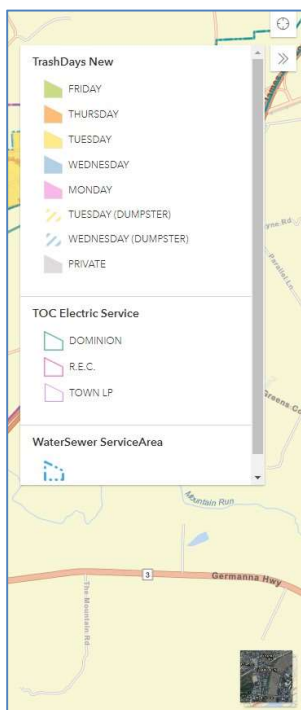
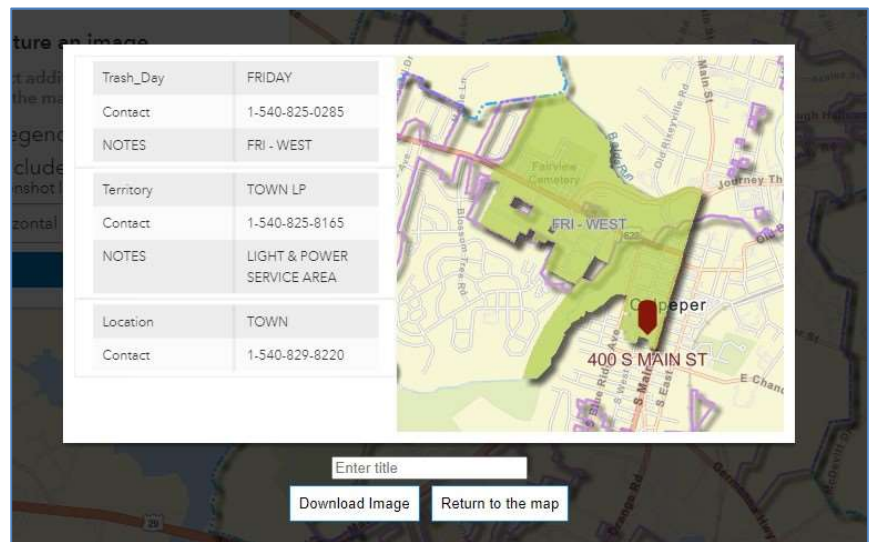
Set the map area

Check the box to include the results list of public utility services available for the selected property.

Also include the Legend, if desired.

Horizontal or Vertical Layout should be taken into account when Setting the Map Area (click, drag, and click again to window around the map area you wish to display in your document).

An image file is generated, you can enter a Title and Download the Image or Return to the map using your internet browser.

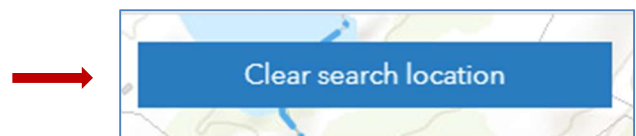


The **Legend** can be expanded to show the symbology for the features displayed on the map by clicking the >> in the top right of the map.

All layers will display at the Home view

The **BaseMap** can be changed from Topo background to aerial photo map by clicking the image square in the lower right of the map.

You can click the **Clear search location** button at the top of the map screen to clear the results and start a new search.



Town GIS Admin can edit the map setups and update or add information, as needed. If you have suggestions for improvements to existing maps or a request for a new mapping application, please share your ideas with us.

CONTACT THE TOWN OF CULPEPER GIS OFFICE:

Autumn Fitch, GIS Coordinator

540-829-8257

afitch@culpeperva.gov

Emily Thompson, GIS Analyst

540-829-8258

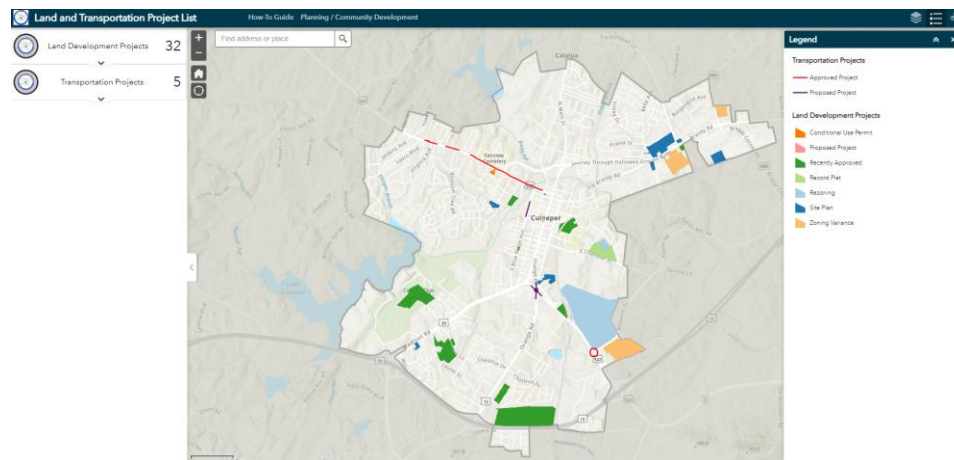
ethompson@culpeperva.gov

How to Use the Land and Transportation Project Viewer

This viewer enables citizens to visualize where current and recently approved Land Development and Transportation Projects are occurring throughout the Town of Culpeper. As projects progress, the Planning Department will update projects status as necessary.

Public Facing Application :

<https://culpeperva.maps.arcgis.com/apps/webappviewer/index.html?id=f972551883444e59a7a7ae75912158035>

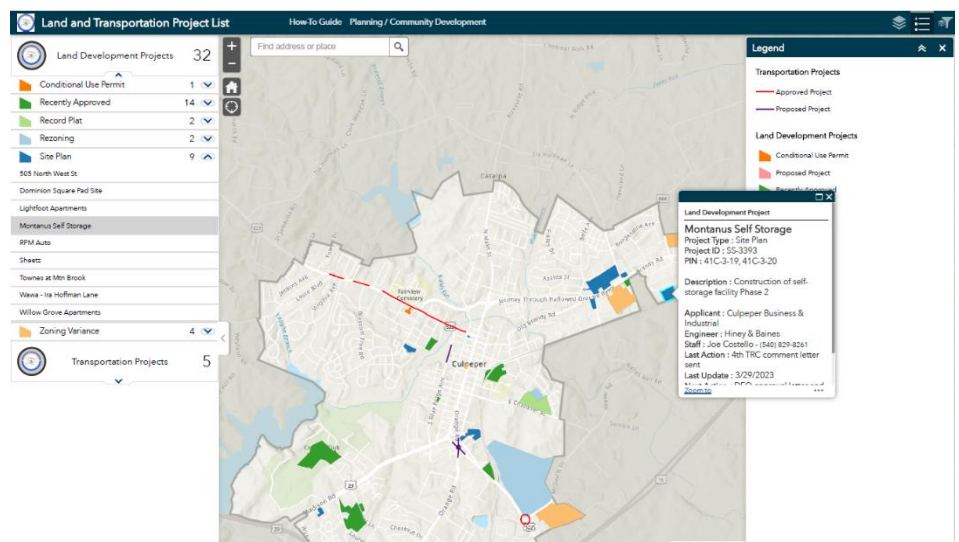


To Use:

View a list of the active or recently approved projects by clicking on the drop downs in the left column. The projects are organized by their type which coordinates with the color on the map.

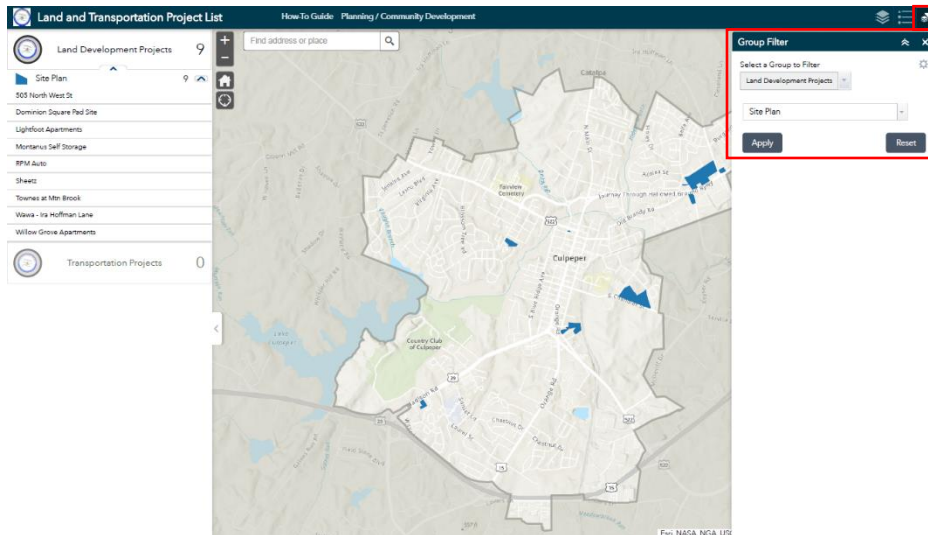
Click a project from the list and the map will pan, highlight and show additional information about the selected project.

Alternatively, you can zoom and click on any project on the map to view the pop-up information



Filter Projects by Type:

Another feature in the Application is the ability to filter all of the projects by Type (Rezoning, Record Plat, Site Plan etc) so you will only view that particular type of project on the map.



To do this. Click on the 'Group Filter' button in the top right corner, select the group you'd like to filter in the drop-down (Land Development or Transportation)

Then select the type of Project you'd like to view and click 'Apply'

The map and list on the left will filter to only show those projects. You can click on the projects on the map or in the list to get additional information in a pop-up. To view another project type simply change the type in the drop-down and click apply or to reset the entire map, click 'Reset'